

# TRPV6/CCP7 FISH Probe Kit

## Introduction

The TRPV6/CCP7 FISH Probe Kit is designed to detect the human TRPV6 gene located on chromosome band 7q34, along with the number of chromosome 7 copies per cell. Rearrangements and abnormal expression of the TRPV6 gene – also known as CAT1, CATL, ZFAB, ECAC2, ABP/ZF, LP6728 or HSA277909 – have been observed in breast and prostate cancer and other tumor types.

## Intended Use

To detect the human *TRPV6* gene located on chromosome band 7q34, along with the number of chromosome 7 copies per cell.

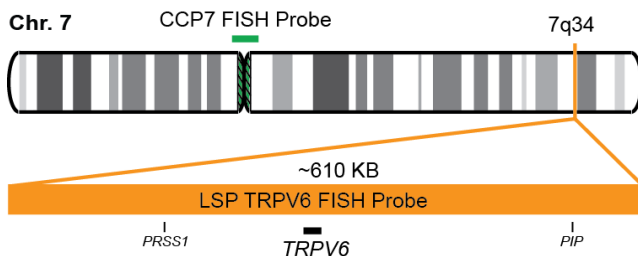
## Cont.

## Color

LSP TRPV6 FISH Probe  
CCP7 FISH Probe

CytoOrange  
CytoGreen

## Probe Design



LSP TRPV6 FISH Probe covers a chromosomal region which includes the entire *TRPV6* gene. CCP7 FISH Probe, derived from chromosome 7-specific alpha satellite DNA, is designed to serve as a control to determine the number of chromosome 7 copies per cell.

Not to Scale

## Cat. No.

## Volume

CT-PAC349-10-OG

10 Tests (100 µL)

## Signal Pattern Interpretation

### Normal Patterns

202G

### Abnormal Patterns

Other Patterns

- 1) Zhuang, L. et al. *Lab. Invest.* 82(12):1755-64 (2002).
- 2) Akey, JM, et al. *Hum. Mol. Genet.* 15(13):2106-13 (2006).
- 3) Bolanz, KA, et al. *Mol. Cancer Ther.* 7(2):271-8 (2008).
- 4) Peng, JB, et al. *Biochem. Biophys. Res. Commun.* 282(3):729-34 (2001).
- 5) Suzuki, Y, et al. *Hum. Mol. Genet.* 17(11):1613-8 (2008).
- 6) Wissenbach, U, et al. *J. Biol. Chem.* 276(22):19461-8 (2001).

\* CE IVD only available in certain countries. All other countries are either ASR or RUO. Please contact your local dealer or our headquarters for more information.

DCN032

© CytoTest Inc.

www.cytotest.com

V2023.06.01

T-07-10-PAC349-OG-EN



CytoTest Inc.  
1395 Piccard Drive, Suite 308  
Rockville, MD 20850, USA