

DNAJC5/CCP20 FISH Probe Kit

Introduction

The DNAJC5/CCP20 FISH Probe Kit is designed to detect the human DNAJC5 gene located on chromosome band 20q13.33, along with the number of chromosome 20 copies per cell. Abnormalities in DNAJC5 – also known as CSP, NCL, CLN4, CLN4B, DNAJC5A, mir-941-2, mir-941-3, mir-941-4 or mir-941-5 – have been observed in autosomal dominant Kufs disease, neuronal ceroid lipofuscinosis and other malignancies.

Intended Use

To measure the copy number of the human *DNAJC5* gene located on chromosome band 20q13.33.

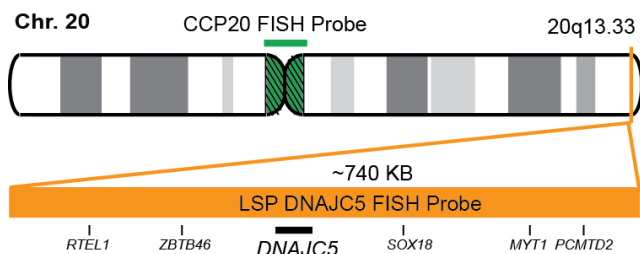
Cont.

Color

LSP DNAJC5 FISH Probe
CCP20 FISH Probe

CytoOrange
CytoGreen

Probe Design



Not to Scale

LSP DNAJC5 FISH Probe covers a chromosomal region which includes the entire *DNAJC5* gene. CCP20 FISH Probe, derived from chromosome 20-specific alpha satellite DNA, is designed to serve as a control to determine the number of chromosome 20 copies per cell.

Cat. No.

Volume

CT-PAC288-10-OG

10 Tests (100 µL)

Signal Pattern Interpretation

Normal Patterns

20/2G

Abnormal Patterns

Other Patterns

- 1) Jarrett P, et al. *Can J Neurol Sci.* 45(2):150-157 (2018).
- 2) Benítez BA, et al. *Acta Neuropathol Commun.* 3:73 (2015).
- 3) Greaves J, et al. *J Biol Chem.* 287(44):37330-9 (2012).
- 4) Benítez BA, et al. *PLoS One.* 6(11):e26741 (2011).
- 5) Noskova L, et al. *Am J Hum Genet.* 89(2):241-52 (2011).

* CE IVD only available in certain countries. All other countries are either ASR or RUO. Please contact your local dealer or our headquarters for more information.

DCN032

© CytoTest Inc.



CytoTest Inc.
1395 Piccard Drive, Suite 308
Rockville, MD 20850, USA