

## PCSK6/CCP15 FISH Probe Kit

### Introduction

The PCSK6/CCP15 FISH Probe Kit is designed to detect the human PCSK6 gene located on chromosome band 15q26.3, along with the number of chromosome 15 copies per cell. Mutations in PCSK6 – also known as SPC4 or PACE4 – have been associated with various cancers including prostate, ovarian, melanoma and other malignancies.

### Intended Use

To measure the copy number of the human *PCSK6* gene located on chromosome band 15q26.3.

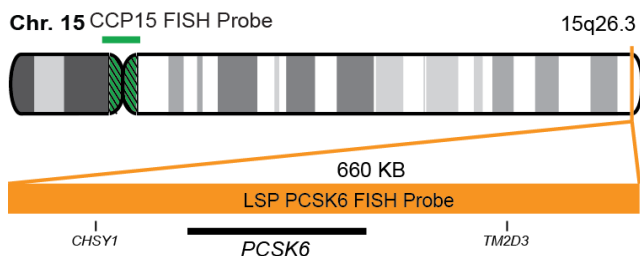
### Cont.

LSP PCSK6 FISH Probe  
CCP15 FISH Probe

### Color

CytoOrange  
CytoGreen

### Probe Design



Not to Scale

LSP PCSK6 FISH Probe covers a chromosomal region, which includes the entire *PCSK6* gene. CCP15 FISH Probe, derived from chromosome 15-specific alpha satellite DNA, is designed to serve as a control to determine the number of chromosome 15 copies per cell.

### Cat. No.

CT-PAC280-10-OG

### Volume

10 Tests (100 µL)

### Signal Pattern Interpretation

#### Normal Patterns

2O2G

#### Abnormal Patterns

Other Patterns

- 1) Couture F, et al. *Cancer Res.* 77(24):6863-6879 (2017).
- 2) Panet F, et al. *Eur J Cell Biol.* 96(5):469-475 (2017).
- 3) Fu Y, et al. *Mol Cancer Res.* 1(8):569-76 (2003).
- 4) Mori K, et al. *J Biochem.* 121(5):941-8 (1997).
- 5) Bassi DE, et al. *Mol Carcinog.* 28(2):63-9 (2000).

\* CE IVD only available in certain countries. All other countries are either ASR or RUO. Please contact your local dealer or our headquarters for more information.

DCN032

© CytoTest Inc.



CytoTest Inc.  
1395 Piccard Drive, Suite 308  
Rockville, MD 20850, USA