

## TUBGCP2/CCP10 FISH Probe Kit

### Introduction

The TUBGCP2/CCP10 FISH Probe Kit is designed to detect the human TUBGCP2 gene located on chromosome band 10q26.3, along with the number of chromosome 10 copies per cell. Defects in TUBGCP2 – also known as ALP4, GCP2, GCP-2, SPC97, h103p, hGCP2, SPBC97, Spc97p, hSpc97, Grip103 or PAMDDFS – are associated with Lissencephaly Spectrum disorders, lymphoma, B-cell leukemia, Parkinson's disease and other malignancies.

### Intended Use

To measure the copy number of the human *TUBGCP2* gene located on chromosome band 10q26.3.

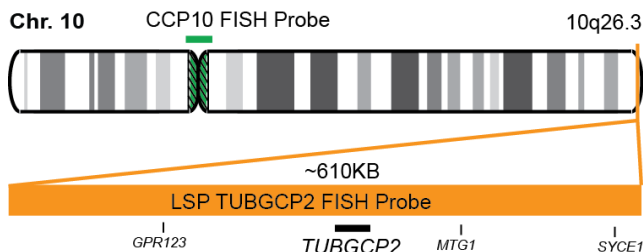
### Cont.

LSP TUBGCP2 FISH Probe  
CCP10 FISH Probe

### Color

CytoOrange  
CytoGreen

### Probe Design



Not to Scale

LSP TUBGCP2 FISH Probe covers a chromosomal region, which includes the entire *TUBGCP2* gene. CCP10 FISH Probe, derived from chromosome 10-specific alpha satellite DNA, is designed to serve as a control to determine the number of chromosome 10 copies per cell.

### Cat. No.

CT-PAC274-10-OG

### Volume

10 Tests (100 µL)

### Signal Pattern Interpretation

#### Normal Patterns

202G

#### Abnormal Patterns

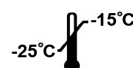
Other Patterns

- 1) Mitani T, et al. *Am J Hum Genet.* 105(5):1005-1015 (2019).
- 2) Ambrogio C, et al. *Blood.* 106(12):3907-16 (2005).
- 3) Jethwa A, et al. *Blood.* 131(25):2789-2802 (2018).
- 4) Costantini JL, et al. *Blood.* 114(21):4703-12 (2009).
- 5) Yu CC, et al. *PLoS One.* 8(1):e55724 (2013).

\* CE IVD only available in certain countries. All other countries are either ASR or RUO. Please contact your local dealer or our headquarters for more information.

DCN032

© CytoTest Inc.



CytoTest Inc.  
1395 Piccard Drive, Suite 308  
Rockville, MD 20850, USA