

CCP15,16,22 FISH Probe Kit

Introduction

The CCP15,16,22 FISH Probe Kit is designed to detect the human chromosomes 15, 16 and 22. Next to defects in chromosomes 21, 13, 14, and involving the sex chromosomes, anomalies of chromosomes 15, 16, 22 are among the most commonly found aberrations during pregnancy and in preimplantation genetic diagnosis or screening. Trisomies, monosomies and other abnormalities of chromosomes 15, 16, 22 are also associated with miscarriages and have been observed in spontaneous abortions.

Intended Use

To measure the copy number of the human chromosomes 15, 16 and 22.

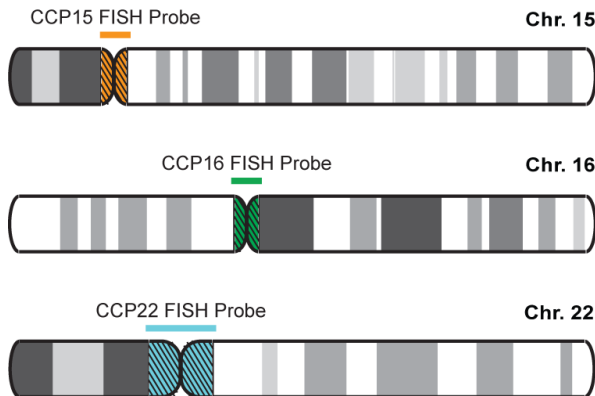
Cont.

CCP15 FISH Probe
CCP16 FISH Probe
CCP22 FISH Probe

Color

CytoOrange
CytoGreen
CytoAqua

Probe Design



CCP15, CCP16 and CCP22 FISH Probe are derived from chromosome 15-, 16- and 22-specific alpha satellite DNA, respectively.

Cat. No.

CT-PAC405-10-OGA

Volume

10 Tests (100 µL)

Signal Pattern Interpretation

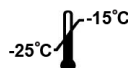
Normal Pattern

2O + 2G + 2A

Abnormal Pattern

Other Patterns

- 1) Munné S, et al. *Hum Reprod.* 14(9):2191-9 (1999).
- 2) Bahce M, et al. *J Assist Reprod Gen.* 16(4):176-81 (1999).
- 3) Gianaroli L, et al. *J Histochem Cytochem.* 53(3):261-7 (2005).
- 4) Mir P, et al. *Hum Reprod.* 25(7):1812-7 (2010).
- 5) Fung J, et al. *Hum Genet.* 107(6):615-22 (2000).



CytoTest Inc.
9430 Key West Ave., Suite 210
Rockville, MD 20850, USA

* CE IVD only available in certain countries. All other countries are either ASR or RUO. Please contact your local dealer or our headquarters for more information.