

# RPPH1/CCP14 FISH Probe Kit

## Introduction

The RPPH1/CCP14 FISH Probe Kit is designed to detect the human *RPPH1* gene located on chromosome band 14q11.2, along with the number of chromosome 14 copies per cell. Abnormalities in *RPPH1* – also known as *H1RNA* or *RPPH1-1* – have been observed in hepatocellular carcinoma, glioma, breast cancer, gastric cancer and other malignancies.

## Intended Use

To measure the copy number of the human *RPPH1* gene located on chromosome band 14q11.2.

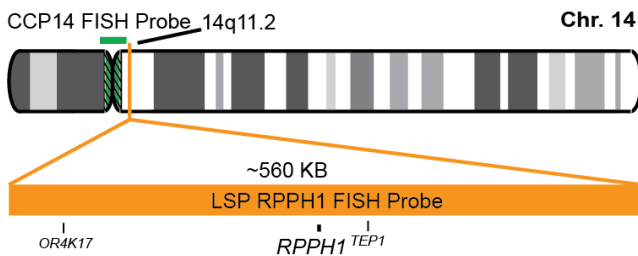
## Cont.

LSP RPPH1 FISH Probe  
CCP14 (Pericentromeric) FISH Probe

## Color

CytoOrange  
CytoGreen

## Probe Design



LSP RPPH1 FISH Probe covers a chromosomal region which includes the entire *RPPH1* gene and some flanking genomic sequences. CCP14 FISH Probe is designed to serve as a control to determine the number of chromosome 14 copies per cell.

Not to Scale

## Cat. No.

CT-PAC373-10-OG

## Volume

10 Tests (100 µL)

## Signal Pattern Interpretation

### Normal Patterns

2O2G

### Abnormal Patterns

Other Patterns

- 1) Altman S, et al. *FASEB J.* 7(1):7-14 (1993).
- 2) Baer M, et al. *Nuclei Acids Res.* 19(1):97-103 (1990).
- 3) Yue K, et al. *Eur Rev Med Pharmacol Sci.* 24(21):11072-11080 (2020).
- 4) Feng Hai, et al. *Aging (Albany NY).* 13(16):20552-20568 (2021).
- 5) Liang ZX, et al. *Cell Death Dis.* 10(11):829 (2019).

\* CE IVD only available in certain countries. All other countries are either ASR or RUO. Please contact your local dealer or our headquarters for more information.

DCN032

© CytoTest Inc.

www.cytotest.com

V2023.01.01

T-07-10-PAC373-OG-EN



CytoTest Inc.  
1395 Piccard Drive, Suite 308  
Rockville, MD 20850, USA