

BCL2L2/CCP14 FISH Probe Kit

Introduction

The BCL2L2/CCP14 FISH Probe Kit is designed to detect the human *BCL2L2* gene located on chromosome band 14q11.2, along with the number of chromosome 14 copies per cell. Abnormal expression of the *BCL2L2* gene – also known as *BCLW*, *BCL-W*, *PPP1R51* or *BCL2-L-2* – has been observed in various solid as well as hematological tumor types.

Intended Use

To measure the copy number of the human *BCL2L2* gene located on chromosome band 14q11.2.

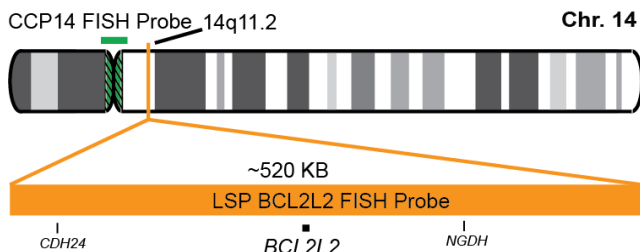
Cont.

LSP BCL2L2 FISH Probe
CCP14 (Pericentromeric) FISH Probe

Color

CytoOrange
CytoGreen

Probe Design



Not to Scale

LSP BCL2L2 FISH Probe covers a chromosomal region which includes the entire *BCL2L2* gene and some flanking genomic sequences. CCP14 FISH Probe is designed to serve as a control to determine the number of chromosome 14 copies per cell.

Cat. No.

CT-PAC368-10-OG

Volume

10 Tests (100 µL)

Signal Pattern Interpretation

Normal Patterns

2O2G

Abnormal Patterns

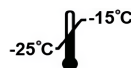
Other Patterns

- 1) Adams CM, et al. Clin Cancer Res. 23(22):7119-7129 (2017).
- 2) Diepstraten ST, et al. Blood Adv. 4(2):356-366 (2020).
- 3) Huang S, et al. Oncotarget. 7(25):38718-38730 (2016).
- 4) Bae IH, et al. Biochem Biophys Res Commun. 450(1):704-10 (2014).
- 5) Kawasaki T, et al. Cancer Sci. 98(7):1070-7 (2007).

* CE IVD only available in certain countries. All other countries are either ASR or RUO. Please contact your local dealer or our headquarters for more information.

DCN032

© CytoTest Inc.



CytoTest Inc.
1395 Piccard Drive, Suite 308
Rockville, MD 20850, USA