

# JAZF1-CAMTA1 Dual Fusion/Translocation FISH Probe Kit

## Introduction

The JAZF1-CAMTA1 Dual Fusion/Translocation FISH Probe Kit is designed to detect rearrangements involving the human *JAZF1* and *CAMTA1* genes, located on chromosome bands 7p15.2 and 1p36.31, respectively. *JAZF1* is also known as *TIP27* or *ZNF802*, and *CAMTA1* is also known as *KIAA0833* or *CANPMR*. Rearrangements involving portions of these two genes have been observed in endometrial stromal tumors and other neoplasias.

## Intended Use

To detect rearrangements involving the human *JAZF1* and *CAMTA1* genes located on chromosome bands 7p15.2 and 1p36.31, respectively.

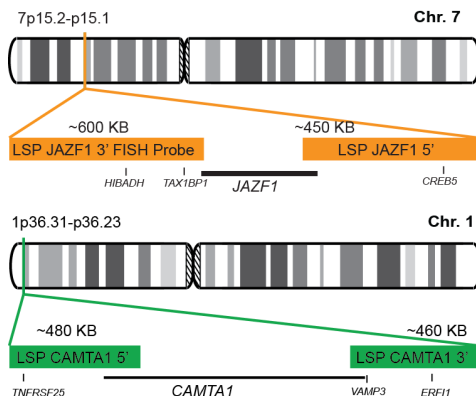
## Cont.

## Color

LSP JAZF1 5'-3' FISH Probe  
LSP CAMTA1 5'-3' FISH Probe

CytoOrange  
CytoGreen

## Probe Design



Not to Scale

LSP JAZF1 5'-3' FISH Probe and LSP CAMTA1 5'-3' FISH Probe cover the 5' (start) and 3' (end) portion and some adjacent genomic sequences of the *JAZF1* and *CAMTA1* genes, respectively. The two probes are flanking sequences across the *JAZF1* and *CAMTA1* genes in which variable breakpoints have been observed.

## Cat. No.

## Volume

CT-PAC333-10-OG

10 Tests (100 µL)

## Signal Pattern Interpretation

### Normal Patterns

2O2G

### Abnormal Patterns

Other Patterns

- 1) Finkler, A, et al. *FEBS Lett.* 581(21):3893-8 (2007).
- 2) Bamashina, V, et al. *Clin. Cancer Res.* 11(3):1119-28 (2005).
- 3) Heinrich, KO, et al. *Eur. J. Cancer* 43(3):607-16 (2007).
- 4) Ichimura, K., et al. *Oncogene* 27(14):2097-108 (2008).
- 5) Kim, MY, et al. *Gastroenterology* 131(6):1913-24 (2006).

\* CE IVD only available in certain countries. All other countries are either ASR or RUO. Please contact your local dealer or our headquarters for more information.

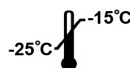
DCN032

© CytoTest Inc.

www.cytotest.com

V2023.01.01

T-07-10-PAC333-OG-EN



CytoTest Inc.  
1395 Piccard Drive, Suite 308  
Rockville, MD 20850, USA