

CDK6/CCP7 FISH Probe Kit

Introduction

The CDK6/CCP7 FISH Probe Kit is designed to detect the human CDK6 gene located on chromosome band 7q21.2, along with the number of chromosome 7 copies per cell. Abnormalities in CDK6 – also known as MCPH12 or PLSTIRE – occur in various types of cancers such as lung, breast, esophageal, pancreatic, color and other malignancies.

Intended Use

To measure the copy number of the human *CDK6* gene located on chromosome band 7q21.2.

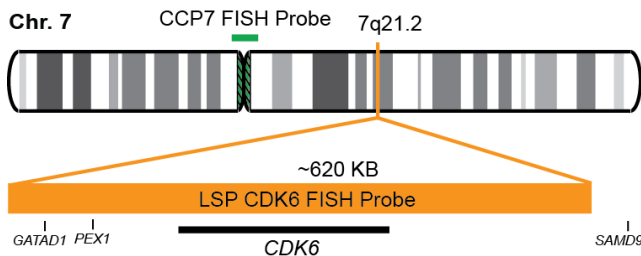
Cont.

LSP CDK6 FISH Probe
CCP7 FISH Probe

Color

CytoOrange
CytoGreen

Probe Design



Not to Scale

LSP CDK6 FISH Probe covers a chromosomal region which includes the entire *CDK6* gene. CCP7 FISH Probe, derived from chromosome 7-specific alpha satellite DNA, is designed to serve as a control to determine the number of chromosome 7 copies per cell.

Cat. No.

CT-PAC331-10-OG

Volume

10 Tests (100 µL)

Signal Pattern Interpretation

Normal Patterns

2O2G

Abnormal Patterns

Other Patterns

- 1) Baba Y, et al. *Clin Cancer Res.* 20(5):1114-24 (2014).
- 2) Nagel S, et al. *Leukemia.* 22(2):387-92 (2008).
- 3) Lee KH, et al. *Pancreatol.* 9(3):293-301 (2009).
- 4) Brito-Babapulle V, et al. *Haematologica.* 87(4):357-62 (2002).
- 5) van der Linden MH, et al. *Cell Cycle.* 13(5):834-44 (2014).

* CE IVD only available in certain countries. All other countries are either ASR or RUO. Please contact your local dealer or our headquarters for more information.

DCN032

© CytoTest Inc.



CytoTest Inc.
1395 Piccard Drive, Suite 308
Rockville, MD 20850, USA