

# WWTR1/CCP3 FISH Probe Kit

## Introduction

The WWTR1/CCP3 FISH Probe Kit is designed to detect the human WWTR1 gene located on chromosome band 3q25.1, along with the number of chromosome 3 copies per cell. Abnormalities in WWTR1 – also known as TAZ – occur in ataxia telangiectasia, and have also been observed in lung adenocarcinoma, prostate adenocarcinoma, bladder urothelial carcinoma and other malignancies.

## Intended Use

To measure the copy number of the human *WWTR1* gene located on chromosome band 3q25.1.

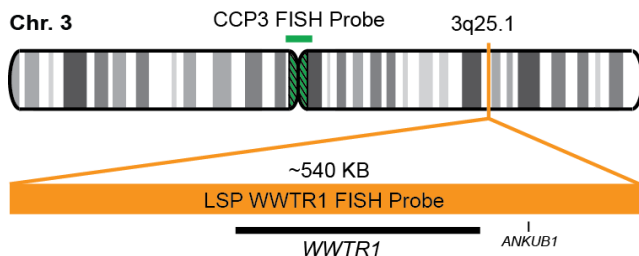
## Cont.

## Color

LSP WWTR1 FISH Probe  
CCP3 FISH Probe

CytoOrange  
CytoGreen

## Probe Design



LSP WWTR1 FISH Probe covers a chromosomal region which includes the entire *WWTR1* gene. CCP3 FISH Probe, derived from chromosome 3-specific alpha satellite DNA, is designed to serve as a control to determine the number of chromosome 3 copies per cell.

Not to Scale

## Cat. No.

## Volume

CT-PAC316-10-OG

10 Tests (100 µL)

## Signal Pattern Interpretation

### Normal Patterns

2O2G

### Abnormal Patterns

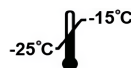
Other Patterns

- 1) Cordenonsi M, et al. *Cell*. 147(4):759-72 (2011).
- 2) Kim J, et al. *Nat Commun*. 6:6781 (2015).
- 3) Feng J, et al. *Oncogene*. 36(42):5829-5839 (2017).
- 4) Ma J, et al. *Cell Death Dis*. 8(1):e2539 (2017).
- 5) Lo Sardo F, et al. *Carcinogenesis*. 38(1):64-75 (2017).

\* CE IVD only available in certain countries. All other countries are either ASR or RUO. Please contact your local dealer or our headquarters for more information.

DCN032

© CytoTest Inc.



CytoTest Inc.  
1395 Piccard Drive, Suite 308  
Rockville, MD 20850, USA