

## ERICH1-AS1/CCP8 FISH Probe Kit

### Introduction

The ERICH1-AS1/CCP8 FISH Probe Kit is designed to detect the human ERICH1-AS1 gene located on chromosome band 8p23.3, along with the number of chromosome 8 copies per cell. The ERICH1-AS1 gene – also known as DLGAP2, DAP2, SAPAP2 or C8orf68 – is biallelically expressed in the brain, however, only the paternal allele is expressed in the testis. The defects of the gene has been associated with Alzheimer's disease.

### Intended Use

To measure the copy number of the human *ERICH1-AS1* gene located on chromosome band 8p23.3.

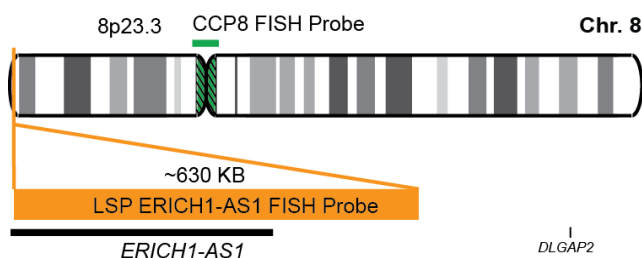
### Cont.

### Color

LSP ERICH1-AS1 FISH Probe  
CCP8 FISH Probe

CytoOrange  
CytoGreen

### Probe Design



Not to Scale

LSP ERICH1-AS1 FISH Probe covers a chromosomal region which includes the *ERICH1-AS1* gene. CCP8 FISH Probe is designed to serve as a control to determine the number of chromosome 8 copies per cell.

### Cat. No.

### Volume

CT-PAC269-10-OG

10 Tests (100 µL)

### Signal Pattern Interpretation

#### Normal Patterns

2O2G

#### Abnormal Patterns

Other Patterns

- 1) Tang Q, et al. *Cell Physiol Biochem*. 37(3):1002-9 (2015).
- 2) Ranta S, et al. *Genome Res*. 7(9):887-96 (1997).
- 3) Guilmatre A, et al. *Arch Gen Psychiatry*. 66(9):947-56 (2009).
- 4) Li JM, et al. *PLoS One*. 9(1):385373 (2014).
- 5) Ranta S, et al. *Eur J Hum Genet*. 8(5):381-4 (2000).

\* CE IVD only available in certain countries. All other countries are either ASR or RUO. Please contact your local dealer or our headquarters for more information.

DCN032

© CytoTest Inc.



CytoTest Inc.  
1395 Piccard Drive, Suite 308  
Rockville, MD 20850, USA