

D4S2390/CCP4 FISH Probe Kit

Introduction

The D4S2390/CCP4 FISH Probe Kit is designed to detect the human D4S2390 marker region located on chromosome band 4q35.2, along with the number of chromosome 4 copies per cell. Abnormalities in D4S2390 region have been associated with various types of malignancies.

Intended Use

To measure the copy number of the human D4S2390 marker region located on chromosome band 4q35.2.

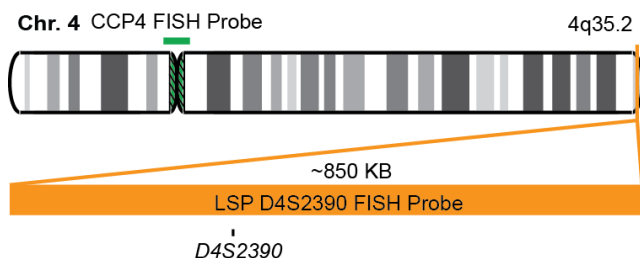
Cont.

Color

LSP D4S2390 FISH Probe
CCP4 FISH Probe

CytoOrange
CytoGreen

Probe Design



Not to Scale

LSP D4S2390 FISH Probe covers a chromosomal region, which includes the D4S2390 region. CCP4 FISH Probe, derived from chromosome 4 specific alpha satellite DNA, is designed to serve as a control to determine the number of chromosome 4 copies per cell.

Cat. No.

Volume

CT-PAC265-10-OG

10 Tests (100 µL)

Signal Pattern Interpretation

Normal Patterns

2O2G

Abnormal Patterns

Other Patterns

- 1) O'Connor C. Nature Education 1:1 (2008).
- 2) Tsuchiya KD. Clin. Lab. Med. 31(4):525-42 (2011).
- 3) Ried T, et al. Hum Mol Genet. 7(10):1619-26 (1998).
- 4) Parra I & Windle B. Nat Genet 5(1):17-21 (1993).
- 5) Speicher MR & Carter NP. Nat Rev Genet. 6(10):782-92 (2005).

* CE IVD only available in certain countries. All other countries are either ASR or RUO. Please contact your local dealer or our headquarters for more information.

DCN032

© CytoTest Inc.



CytoTest Inc.
1395 Piccard Drive, Suite 308
Rockville, MD 20850, USA