

MGEA5 Break Apart FISH Probe Kit

Introduction

The MGEA5 Break Apart FISH Probe Kit is designed to detect rearrangements in the human MGEA5 gene located on chromosome band 10q24.32. In addition to revealing breaks, which can lead to translocation of parts of the gene, inversion, or its fusion to other genes, the probe set can also be used to identify other MGEA5 aberrations such as deletions or amplifications. Rearrangements and abnormal expression of the MGEA5 gene – also known as OGA, MEA5 or NCOAT – are frequent found in some fibroblastic and fibrolipomatous sarcomas and are also found in multiple myeloma and many other malignancies, including breast, colorectal, hepatocellular, oral, lung, prostate, ovarian, pancreatic and other cancers.

Intended Use

To detect rearrangements in the human *MGEA5* gene located on chromosome band 10q24.32.

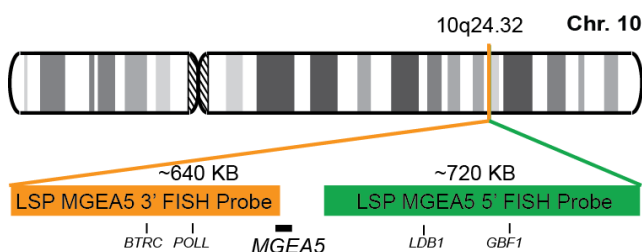
Cont.

Color

LSP MGEA5 5' FISH Probe
LSP MGEA5 3' FISH Probe

CytoGreen
CytoOrange

Probe Design



Not to Scale

LSP MGEA5 5' FISH Probe covers some genomic sequences adjacent to the 5' end of the *MGEA5* gene. LSP MGEA5 3' FISH Probe covers the 3' end and some sequence downstream of the gene. The two probes are flanking sequences across the *MGEA5* gene in which variable breakpoints have been observed.

Cat. No.

Volume

CT-PAC247-10-GO

10 Tests (100 µL)

Signal Pattern Interpretation

Normal Patterns

2F*

Abnormal Patterns

Other Patterns

*Overlapping orange and green signals can appear as yellow.

1) Finger EC, et al. *Carcinogenesis* 29(3):528-35 (2008).
2) Dong M, et al. *J. Clin. Invest.* 117(1):206-17 (2007).
3) Antonescu CR, et al. *Genes Chromosomes Cancer* 50(10):757-64 (2011).
4) Kao YC, et al. *Am. J. Surg. Pathol.* 41(11):1456-1465 (2017).
5) Liu H, et al. *Arch. Pathol. Lab. Med.* <https://doi.org/10.5858/arpa.2017-0412-RA> (2018).

* CE IVD only available in certain countries. All other countries are either ASR or RUO. Please contact your local dealer or our headquarters for more information.