

# BCR-ABL1/ASS1 Tri-color Fusion/Translocation FISH Probe Kit

## Introduction

The BCR-ABL1/ASS1 Tri-color Fusion/Translocation FISH Probe Kit is designed to detect rearrangements involving the human *BCR*, *ABL1* and *ASS1* genes located on chromosome bands 22q11.23, 9q34.12 and 9q34.11, respectively. A reciprocal translocation between the two regions is present in virtually all cases of chronic myelocytic leukemia (CML), but also occurs in a subset of pediatric and adult acute lymphocytic leukemias (ALL), acute myelogenous leukemia (AML) and other malignancies.

## Intended Use

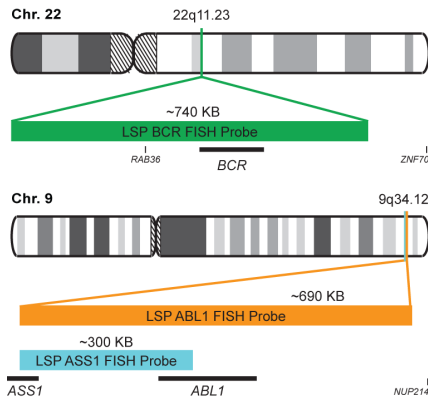
To detect rearrangements involving the human *BCR*, *ABL1* and *ASS1* genes located on chromosome bands 22q11.23, 9q34.12 and 9q34.11, respectively.

Cont.	Color
-------	-------

LSP BCR FISH Probe  
LSP ABL1 FISH Probe  
LSP ASS1 FISH Probe

CytoGreen  
CytoOrange  
CytoAqua

## Probe Design



LSP BCR FISH Probe covers the entire *BCR* gene along with some upstream (5') and downstream (3') flanking untranslated genomic sequences; the probe overlaps the known major and minor breakpoints observed in the region. LSP ABL1 FISH Probe spans the complete *ABL1* gene, including the common breakpoint region upstream of exon 2, as well as adjacent 5' and 3' untranslated genomic sequences. LSP ASS1 FISH Probe covers the *ASS1* gene and some genomic sequences adjacent to the 3' end of the gene. The probe set is optimized to reveal the typical t(9;22)(q34;q11) translocation in metaphase and interphase blood or bone marrow cells.

Cat. No.	Volume
----------	--------

CT-PAC110-10-GOA	10 Tests (100 µL)
------------------	-------------------

## Signal Pattern Interpretation

Normal Pattern	Abnormal Pattern
2O + 2G + 2A*	Other Patterns

\*Overlapping orange and green signals can appear as yellow.

- Ernst T, et al. *Hematol Oncol Clin North Am.* 25(5):997-1008, v-vi (2011).
- Nowell PC, Hungerford DA. *J Natl Cancer Inst.* 25:85-109 (1960).
- Rowley JD. *Nature.* 243(5405):290-3 (1973).
- Landstrom AP & Tefferi A. *Leuk Lymphoma.* 47(3):397-402 (2006).
- Druker BJ, et al. *N Engl J Med.* 355(23):2408-17 (2006).

\* CE IVD only available in certain countries. All other countries are either ASR or RUO. Please contact your local dealer or our headquarters for more information.



CytoTest Inc.  
9430 Key West Ave., Suite 210  
Rockville, MD 20850, USA