

CHD1/CCP5 FISH Probe Kit

Introduction

The CHD1/CCP5 FISH Probe Kit is designed to detect the human CHD1 gene located on chromosome band 5q15, along with the number of chromosome 5 copies per cell. Abnormalities in CHD1 gene occur in prostate cancer and other tumor types.

Intended Use

To measure the copy number of the human *CHD1* gene located on chromosome band 5q15.

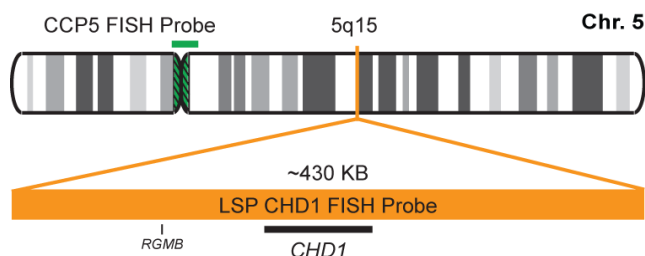
Cont.

Color

LSP CHD1 FISH Probe
LSP D5S23,D5S721 FISH Probe

CytoOrange
CytoGreen

Probe Design



LSP CHD1 FISH Probe covers a chromosomal region which includes the entire *CHD1* gene. CCP5 FISH Probe, derived from chromosome 5-specific alpha satellite DNA, is designed to serve as a control to determine the number of chromosome 5 copies per cell.

Not to Scale

Cat. No.

Volume

CT-PAC105-10-OG

10 Tests (100 µL)

Signal Pattern Interpretation

Normal Patterns

202G

Abnormal Patterns

Other Patterns

- 1) O'Connor C. *Nature Education*. 1(1):171 (2008).
- 2) Tereshchenko IV, et al. *Prostate*. 74(15):1551-9 (2014).
- 3) Piatti P, et al. *Sci Rep*. 5:8007 (2015).
- 4) Fisher KW, et al. *Curr Drug Targets*. 16(2):103-14 (2015).
- 5) Yao H, et al. *Mol Cancer*. 14(1):81 (2015).

* CE IVD only available in certain countries. All other countries are either ASR or RUO. Please contact your local dealer or our headquarters for more information.