

CHD1/D5S23, D5S721 FISH Probe Kit

Introduction

The CHD1/D5S23, D5S721 FISH Probe Kit is designed to detect the human *CHD1* gene located on chromosome band 5q15 and the D5S23-D5S721 marker region on chromosome band 5p15.2. Abnormalities in *CHD1* occur in prostate cancer and other tumor types.

Intended Use

To measure the copy number of the human *CHD1* gene located on chromosome band 5q15.

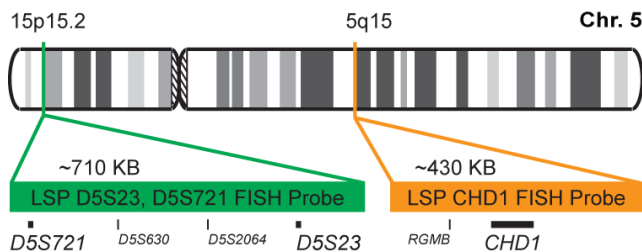
Cont.

LSP CHD1 FISH Probe
LSP D5S23, D5S721 FISH
Probe

Color

CytoOrange
CytoGreen

Probe Design



LSP CHD1 FISH Probe covers a chromosomal region which includes the entire *CHD1* gene. LSP D5S23, D5S721 FISH Probe covers genomic sequences around STS markers D5S23 and D5S721.

Not to Scale

Cat. No.

CT-PAC103-10-OG

Volume

10 Tests (100 µL)

Signal Pattern Interpretation

Normal Pattern

2O + 2G

Abnormal Pattern

Other Patterns

- 1) O'Connor C. *Nature Education*. 1(1):171 (2008).
- 2) Tereshchenko IV, et al. *Prostate*. 74(15):1551-9 (2014).
- 3) Piatti P, et al. *Sci Rep*. 5:8007 (2015).
- 4) Fisher KW, et al. *Curr Drug Targets*. 16(2):103-14 (2015).
- 5) Yao H, et al. *Mol Cancer*. 14(1):81 (2015).



CytoTest Inc.
9430 Key West Ave., Suite 210
Rockville, MD 20850, USA

* CE IVD only available in certain countries. All other countries are either ASR or RUO. Please contact your local dealer or our headquarters for more information.