

# SFPQ-TFE3 Fusion/Translocation FISH Probe Kit

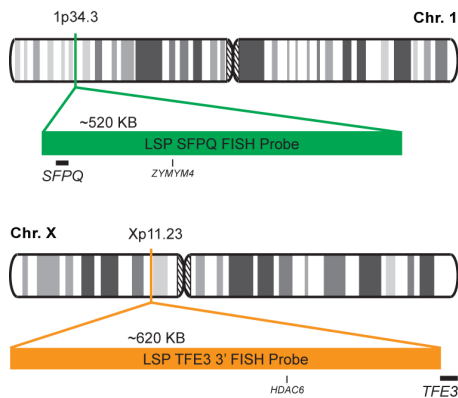
## Introduction

The SFPQ-TFE3 Fusion/Translocation FISH Probe Kit is designed to detect rearrangements involving the human *SFPQ* and *TFE3* genes located on chromosome bands 1p34.3 and Xp11.23, respectively. Rearrangements between the two genes, the *TFE3* gene – also called *TFEA*, *RCCP2*, *RCCX1* or *bHLHe33*, have been observed in renal cell carcinoma subtypes and other tumor types.

Intended Use
To detect rearrangements involving the human <i>SFPQ</i> and <i>TFE3</i> genes located on chromosome bands 1p34.3 and Xp11.23, respectively.

Cont.	Color
LSP SFPQ FISH Probe LSP TFE3 3' FISH Probe	CytoGreen CytoOrange

## Probe Design



Not to Scale

LSP SFPQ 5' FISH Probe covers the entire *SFPQ* gene and some genomic sequences adjacent to the 5' (start) and 3' (end) portion of the gene. LSP TFE3 3' FISH Probe covers the 3' (end) part as well as sequences downstream of the *TFE3* gene. The probe set is optimized to reveal translocations between the two genes.

Cat. No.	Volume
CT-PAC095-10-GO	10 Tests (100 µL)

Signal Pattern Interpretation	
<u>Normal Patterns</u> 2O2G*	<u>Abnormal Patterns</u> Other Patterns

\*Overlapping orange and green signals can appear as yellow.

- 1) Malouf GG, et al. *Ann Oncol.* 21(9):1834-8 (2010).
- 2) Aulmann S, et al. *Histopathology.* 50(7):881-6 (2007).
- 3) Rao Q, et al. *Am J Surg Pathol.* 37(6):804-15 (2013).
- 4) Straub T, et al. *J Biol Chem.* 273(41):26261-4 (1998).
- 5) Clark J, et al. *Oncogene.* 15(18):2233-9 (1997).



CytoTest Inc.  
9430 Key West Ave., Suite 210  
Rockville, MD 20850, USA

\* CE IVD only available in certain countries. All other countries are either ASR or RUO. Please contact your local dealer or our headquarters for more information.