

# PDGFRA/CCP4 FISH Probe Kit

## Introduction

The PDGFRA/CCP4 FISH Probe Kit is designed to detect the human *PDGFRA* gene located on chromosome band 4q12, along with the number of chromosome 4 copies per cell. Rearrangements and abnormal expression of the *PDGFRA* gene – also known as *CD140A*, *PDGFR2*, *PDGFR-2* or *RHEPDGFRA* – have been observed in gastrointestinal stromal tumors (GIST), lung adenocarcinoma and other hematologic and solid tissue disorders.

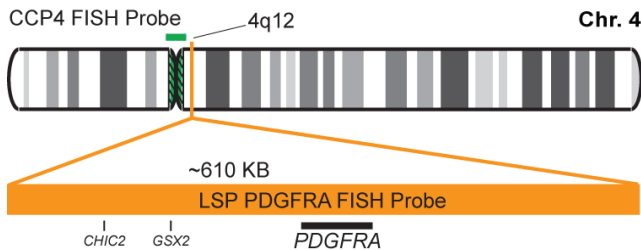
### Intended Use

To measure the copy number of the human *PDGFRA* gene located on chromosome band 4q12.

Cont.	Color
-------	-------

LSP PDGFRA FISH Probe	CytoOrange
CCP4 FISH Probe	CytoGreen

## Probe Design



LSP PDGFRA FISH Probe covers a chromosomal region which includes the entire *PDGFRA* gene. CCP4 FISH Probe, derived from chromosome 4-specific alpha satellite DNA, is designed to serve as a control to determine the number of chromosome 4 copies per cell.

Not to Scale

Cat. No.	Volume
----------	--------

CT-PAC092-10-OG	10 Tests (100 µL)
-----------------	-------------------

### Signal Pattern Interpretation

Normal Pattern	Abnormal Pattern
----------------	------------------

20 + 2G	Other Patterns
---------	----------------

- 1) Gronwald RG, et al. *Hum Genet.* 85(3):383-5 (1990).
- 2) Lasota J & Miettinen M. *Histopathology.* 53(3):245-66 (2008).
- 3) Demoulin JB & Montano-Almendras CP. *Am J Blood Res.* 2(1):44-56 (2012).
- 4) Seo JS, et al. *Genome Res.* 22(11):2109-19 (2012).
- 5) Jain N, et al. *Blood.* 122(19):3387-8 (2013).



CytoTest Inc.  
9430 Key West Ave., Suite 210  
Rockville, MD 20850, USA

\* CE IVD only available in certain countries. All other countries are either ASR or RUO. Please contact your local dealer or our headquarters for more information.