

CDKN2C/CCP1 FISH Probe Kit

Introduction

The CDKN2C/CCP1 FISH Probe Kit is designed to detect the human *CDKN2C* gene located on chromosome band 1p32.3, along with the number of chromosome 1 copies per cell. Abnormalities in *CDKN2C* – also known as *p18*, *INK4C* or *p18-INK4C* – occur in multiple myeloma and several other malignancies.

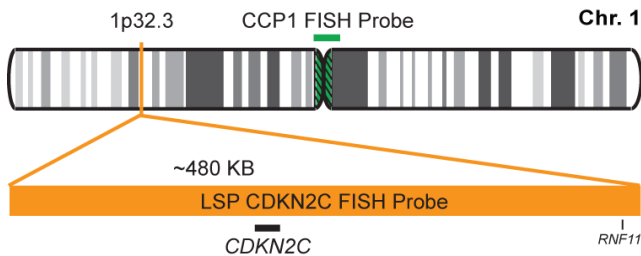
Intended Use

To measure the copy number of the human *CDKN2C* gene located on chromosome band 1p32.3.

Cont.	Color
-------	-------

LSP CDKN2C FISH Probe CCP1 FISH Probe	CytoOrange CytoGreen
--	-------------------------

Probe Design



LSP CDKN2C FISH Probe covers a chromosomal region which includes the entire *CDKN2C* gene. CCP1 FISH Probe, derived from chromosome 1-specific alpha satellite DNA, is designed to serve as a control to determine the number of chromosome 1 copies per cell.

Not to Scale

Cat. No.	Volume
CT-PAC064-10-OG	10 Tests (100 µL)

Signal Pattern Interpretation	
<u>Normal Pattern</u>	<u>Abnormal Pattern</u>
2O + 2G	Other Patterns

- 1) Helou K, et al. *Genes Chromosomes Cancer*. 27(4):362-72 (2000).
- 2) Mao X, et al. *J Invest Dermatol*. 126(6):1388-95 (2006).
- 3) Leone PE, et al. *Clin Cancer Res*. 14(19):6033-41 (2008).
- 4) Boyd KD, et al. *Clin Cancer Res*. 17(24):7776-84 (2011).
- 5) Smetana J, et al. *Biomed Res Int*. 2014:209670 (2014).



CytoTest Inc.
9430 Key West Ave., Suite 210
Rockville, MD 20850, USA

* CE IVD only available in certain countries. All other countries are either ASR or RUO. Please contact your local dealer or our headquarters for more information.