

BIRC3-MALT1 Fusion/Translocation FISH Probe Kit

Introduction

The BIRC3-MALT1 Fusion/Translocation FISH Probe Kit is designed to detect rearrangements involving the human *BIRC3* and *MALT1* genes located on chromosome bands 11q22.2 and 18q21.32, respectively. Rearrangements involving portions of these two genes, the *BIRC3* gene – also known as *AIP1*, *API2*, *CIAP2*, *HAIP1*, *HIAP1*, *MALT2*, *MIHC*, *RNF49* or *c-IAP2* – and the *MALT1* gene – also called *IMD12*, *MLT* or *MLT1*, have been observed in mucosa-associated lymphoid tissue (MALT) and other lymphoma types.

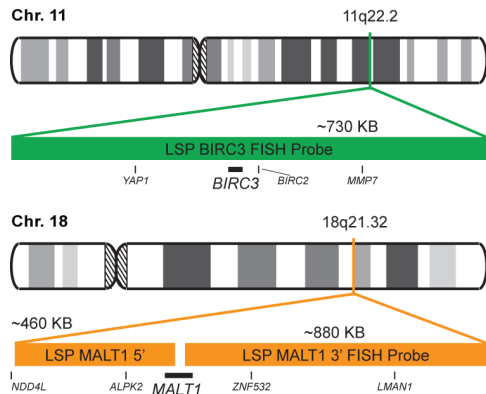
Intended Use

To detect rearrangements involving the human *BIRC3* and *MALT1* genes located on chromosome bands 11q22.2 and 18q21.32, respectively.

Cont.	Color
-------	-------

LSP BIRC3 FISH Probe LSP MATL1 5'-3' FISH Probe	CytoGreen CytoOrange
--	-------------------------

Probe Design



LSP BIRC3 FISH Probe covers a chromosomal region which includes the entire *BIRC3* gene. LSP MALT1 5'-3' FISH Probe covers the 5' and 3' portions of the *MALT1* gene and some genomic sequences adjacent to the two ends of the gene. The probe set is optimized to reveal translocations between the two regions.

Cat. No.	Volume
----------	--------

CT-PAC062-10-GO	10 Tests (100 µL)
-----------------	-------------------

Signal Pattern Interpretation

<u>Normal Pattern</u> 2O + 2G*	<u>Abnormal Pattern</u> Other Patterns
*Overlapping orange and green signals can appear as yellow.	

1) Dierlamm J, et al. *Blood*. 93(11):3601-9 (1999).
 2) Baens M, et al. *Am J Pathol*. 156(4):1433-9 (2000).
 3) Maes B, et al. *Ann Oncol*. 11(5):521-6 (2000).
 4) Dierlamm J, et al. *Blood*. 96(6):2215-8 (2000).
 5) Baens M, et al. *Genes Chromosomes Cancer*. 29(4):281-91 (2000).

* CE IVD only available in certain countries. All other countries are either ASR or RUO. Please contact your local dealer or our headquarters for more information.

