

CDK4/CCP12 FISH Probe Kit

Introduction

The CDK4/CCP12 FISH Probe Kit is designed to detect the human *CDK4* gene located on chromosome band 12q14.1, along with the number of chromosome 12 copies per cell. Abnormalities in *CDK4* – also known as *CMM3* or *PSK-J3* – occur in gliomas and sarcoma and in various other familial or sporadic tumor types.

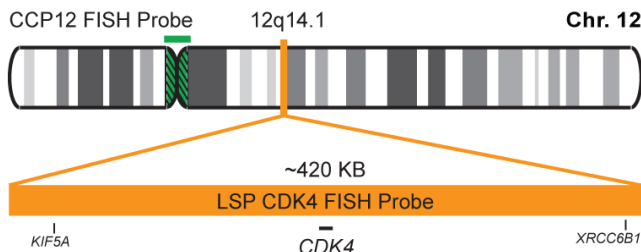
Intended Use

To measure the copy number of the human *CDK4* gene located on chromosome band 12q14.1.

| Cont. | Color |
|-------|-------|
|-------|-------|

| | |
|---------------------|-------------------------|
| LSP CDK4 FISH Probe | CytoOrange CytoGreen |
| CCP12 FISH Probe | |

Probe Design



LSP CDK4 FISH Probe covers a chromosomal region which includes the entire *CDK4* gene. CCP12 FISH Probe, derived from chromosome 12-specific alpha satellite DNA, is designed to serve as a control to determine the number of chromosome 12 copies per cell.

Not to Scale

| Cat. No. | Volume |
|----------|--------|
|----------|--------|

| | |
|-----------------|-------------------|
| CT-PAC048-10-OG | 10 Tests (100 µL) |
|-----------------|-------------------|

Signal Pattern Interpretation

| Normal Pattern | Abnormal Pattern |
|----------------|------------------|
|----------------|------------------|

| | |
|---------|----------------|
| 20 + 2G | Other Patterns |
|---------|----------------|

- 1) Khatib ZA, et al. *Cancer Res.* 53(22):5535-41 (1993).
- 2) Reifenberger G, et al. *Cancer Res.* 54(16):4299-303 (1994).
- 3) Sehgal A. *Semin Surg Oncol.* 14(1):3-12 (1998).
- 4) Soufir N, et al. *Hum Mol Genet.* 7(2):209-16 (1998).
- 5) Curtin JA, et al. *N Engl J Med.* 353(20):2135-47 (2005).



CytoTest Inc.
9430 Key West Ave., Suite 210
Rockville, MD 20850, USA

* CE IVD only available in certain countries. All other countries are either ASR or RUO. Please contact your local dealer or our headquarters for more information.