

TFG Break Apart FISH Probe Kit

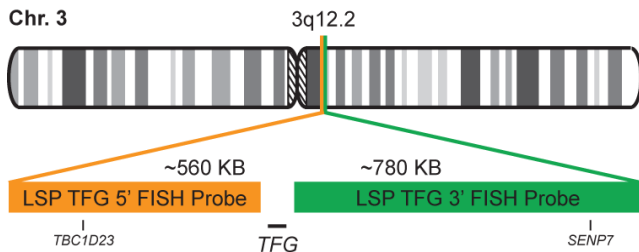
Introduction

The TFG Break Apart FISH Probe Kit is designed to detect rearrangements in the human *TFG* gene located on chromosome band 3q12.2. In addition to revealing breaks, which can lead to translocation of parts of the gene, inversion, or its fusion to other genes, the probe set can also be used to identify other *TFG* aberrations such as deletions or amplifications. Rearrangements and abnormal expression of the *TFG* gene – also known as *TF6*, *HMSNP*, *SPG57* or *TRKT3* – have been observed in anaplastic large cell lymphoma, thyroid papillary carcinoma, extraskeletal myxoid chondrosarcoma, renal cell carcinoma and other cancer types.

Intended Use
To detect rearrangements in the human <i>TFG</i> gene located on chromosome band 3q12.2.

Cont.	Color
LSP TFG 5' FISH Probe LSP TFG 3' FISH Probe	CytoOrange CytoGreen

Probe Design



LSP TFG 5' FISH Probe covers some genomic sequences adjacent to the 5' (start) portion of the *TFG* gene. LSP TFG 3' FISH Probe covers some sequences downstream of the 3' end of the gene. The two probes are flanking sequences across the *TFG* gene in which various breakpoints have been observed.

Not to Scale

Cat. No.	Volume
CT-PAC042-10-OG	10 Tests (100 µL)

Signal Pattern Interpretation	
<u>Normal Pattern</u> 2OG*	<u>Abnormal Pattern</u> Other Patterns
*Overlapping orange and green signals can appear as yellow.	

- 1) Greco A, et al. *Mol Cell Biol.* 15(11):6118-27 (1995).
- 2) Mencinger M, et al. *Genomics.* 41(3):327-31 (1997).
- 3) Hernández L, et al. *Blood.* 94(9):3265-8 (1999).
- 4) Hernández L, et al. *Am J Pathol.* 160(4):1487-94 (2002).
- 5) Hisaoka M, et al. *Genes Chromosomes Cancer.* 40(4):325-8 (2004).



CytoTest Inc.
9430 Key West Ave., Suite 210
Rockville, MD 20850, USA

* CE IVD only available in certain countries. All other countries are either ASR or RUO. Please contact your local dealer or our headquarters for more information.