

# CISD2/CCP4 FISH Probe Kit

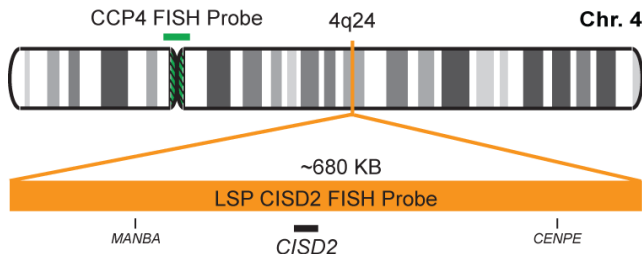
## Introduction

The CISD2/CCP4 FISH Probe Kit is designed to detect the human *CISD2* gene located on chromosome band 4q24, along with the number of chromosome 4 copies per cell. Abnormalities in *CISD2* – also known as *ERIS*, *WFS2*, *ZCD2*, *NAF-1* or *Miner1* – have been observed in liver cancer and other malignancies. The gene has been associated with Wolfram Syndrome.

Intended Use
To measure the copy number of the human <i>CISD2</i> gene located on chromosome band 4q24.

Cont.	Color
LSP CISD2 FISH Probe CCP4 FISH Probe	CytoOrange CytoGreen

## Probe Design



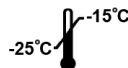
LSP CISD2 FISH Probe covers a chromosomal region which includes the entire *CISD2* gene. CCP4 FISH Probe, derived from chromosome 4-specific alpha satellite DNA, is designed to serve as a control to determine the number of chromosome 4 copies per cell.

Not to Scale

Cat. No.	Volume
CT-PAC024-10-OG	10 Tests (100 µL)

Signal Pattern Interpretation	
<u>Normal Pattern</u>	<u>Abnormal Pattern</u>
20 + 2G	Other Patterns

- Chen YF, et al. *Ann N Y Acad Sci.* 1201:58-64 (2010).
- Rigoli L & Di Bella C. *Curr Opin Pediatr.* 24(4):512-7 (2012).
- Wang CH, et al. *Hum Mol Genet.* 23(18):4770-85 (2014).
- Wang CH, et al. *Free Radic Res.* 48(9):1109-14 (2014).
- Liu L, et al. *Med Oncol.* 31(9):183 (2014).



CytoTest Inc.  
9430 Key West Ave., Suite 210  
Rockville, MD 20850, USA

\* CE IVD only available in certain countries. All other countries are either ASR or RUO. Please contact your local dealer or our headquarters for more information.