

# MDM2/CCP12 FISH Probe Kit

## Introduction

The MDM2/CCP12 FISH Probe Kit is designed to detect the human *MDM2* gene located on chromosome band 12q15, along with the number of chromosome 12 copies per cell. Abnormal expression of the *MDM2* gene – also known as *HDMX*, *hdm2* or *ACTFS* – has been observed in soft tissue sarcomas and osteosarcomas.

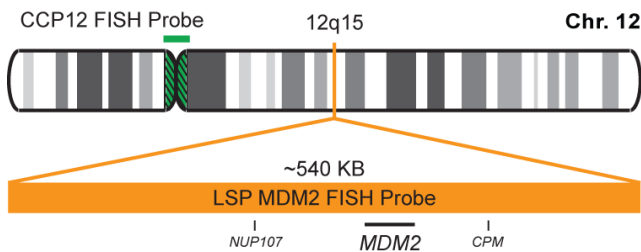
## Intended Use

To measure the copy number of the human *MDM2* gene located on chromosome band 12q15.

Cont.	Color
-------	-------

LSP MDM2 FISH Probe	CytoOrange CytoGreen
CCP12 FISH Probe	

## Probe Design



LSP MDM2 FISH Probe covers a chromosomal region which includes the entire *MDM2* gene. CCP12 FISH Probe, derived from chromosome 12-specific alpha satellite DNA, is designed to serve as a control to determine the number of chromosome 12 copies per cell.

Not to Scale

Cat. No.	Volume
----------	--------

CT-PAC019-10-OG	10 Tests (100 µL)
-----------------	-------------------

## Signal Pattern Interpretation

Normal Pattern	Abnormal Pattern
----------------	------------------

20 + 2G	Other Patterns
---------	----------------

- Oliner JD, et al. *Nature*. 358(6381):80-3 (1992).
- Watanabe T, et al. *Leuk Lymphoma*. 21(5-6):391-7 (1996)
- Honda R, et al. *FEBS Lett*. 420(1):25-7 (1997).
- Momand J, et al. *Nucleic Acids Res*. 26(15):3453-9 (1998).
- Bond GL, et al. *Cell*. 119(5):591-602 (2004).



CytoTest Inc.  
9430 Key West Ave., Suite 210  
Rockville, MD 20850, USA

\* CE IVD only available in certain countries. All other countries are either ASR or RUO. Please contact your local dealer or our headquarters for more information.